



MANTSOPA

MUNICIPALITY

(Incorporating Ladybrand, Tweespruit, Excelsior, Hobhouse & Thaba Patchoa)
(As from 6 December 2000)

LOCAL MUNICIPALITY

24 MAR 2021

CHIEF CLERK
CHAIN MANAGEMENT

File no.:

Contact Person: Khotso Pharoe

Head office

Private Bag X11 or
P.O. Box 64
LADYBRAND
9745

38 Joubert Street
LADYBRAND
9745

Tel: 051-9240654
051-9240659
051-9240655
051-9240657

Fax: 051-9240020

E-mail:
mantsopamun@xsinet.co.za

Area Offices

P.O. Box 76
TWEESPRUIT
9760

Tel: 051-9730015

Fax: 051-9730865

P.O. Box 24
EXCELSIOR
9760

Tel: 051-9730015

Fax: 051-9730865

P.O. Box 5
HOBHOUSE
9740

Tel: 051-9640012

Hobhouse Way 177

THABA PATCHOA
9771

Tel: 051-9640012

Fax: 051-9640054

24 March 2021

INVITATION FOR QUOTATIONS – RE-SUPPLY, DELIVERY AND OFF-LOADING OF PORTABLE FIRE FIGHTING PUMP FOR MANTSOPA LOCAL MUNICIPALITY.

Quotations are hereby invited from service providers to Re-Supply, Delivery and Off-loading of portable fire fighting pump for Mantsopa Local Municipality.

Specifications:

ENGINE- • Briggs & Stratton Vanguard: 4 cycle, 23 HP, V-twin, OHV, replaceable oil filter, 12-volt starter, recoil rope start back-up, 16 amp regulated alternator 6 gal. fuel tank, control panel.

DIMENSIONS & WEIGHT

- 24"L x 21"W x 24"H, 195 lbs. (89 kg)

APPLICATIONS

- Booster reel, multiple hand lines, wildland/attack fire suppression

STANDARD FEATURES

- Aluminum alloy casing
- Discharge valve

All correspondence to be addressed to the Municipal Manager

T.P.

- Bronze impeller and seal rings
- Stainless steel impeller shaft
- Mechanical seal
- Exhaust primer
- Built-in discharge check valve
- Adjustable discharge valve
- 3" NPT suction
- 2-11/2" NPT and 1-21/2" NPT discharges (not shown)

OPTIONS

Adapters, gauge, battery, caps, Smartstart

PERFORMANCE

390 gpm (1476 L/M) @ 30 psi (2.1 bar)

200 gpm (757 L/M) @ 110 psi (7.6 bar)

100 gpm (378 L/M) @ 140 psi (9.7 bar)

NB:

The bidder must indicate delivery period on the quotation

The bidder must fill in the MBD 4 Forms

The MBD 4 Forms are obtainable at Mantsopa website:

www.mantsopa.fs.gov.za

All items must be delivered at once

The quote can be emailed to supplychain@mantsopa.co.za

Please attach a picture as a sample.

GENERAL CONDITIONS

All quotations must comply with the following conditions:

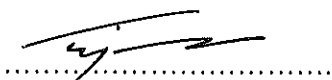
1. Item must be fully described.
2. Price for items must include VAT
3. Indication of whether price is firm or not firm.
4. Quotations must be valid for a minimum period of 30 days.
5. Delivery period must be indicated and show whether it is firm or not firm.
6. Quotation must be signed by a duly authorized person. **No faxed quotation**
7. An original tax clearance certificate must be attached. No quotation will, however, be awarded to bidders who have failed to submit the original tax clearance certificate.
8. The 80/20 adjudication system will be applicable, where 80 points, will be allocated for price and 20 points, will be allocated for **BBBEE Status Level Verification Certificate**.
9. **Only service providers who are in the Central Supplier Database (CSD)**
10. The successful supplier will be the one who scores the highest points.

Enquiries on Specification: Mr. K Cloute at **060 507 0529**

Notes

- **Quotations must be submitted and deposited in the tender boxes (telephone number: 051 924 0654) at 38 Joubert Street, Ladybrand 9745, on or before 31 March 2021@12h00 the envelope must be sealed and clearly marked 'RE-SUPPLY, DELIVERY AND OFF-LOADING OF PORTABLE FIRE FIGHTING PUMP FOR MANTSOPA LOCAL MUNICIPALITY.' quoting reference number SCM/WD 10/20/21.**

Yours faithfully



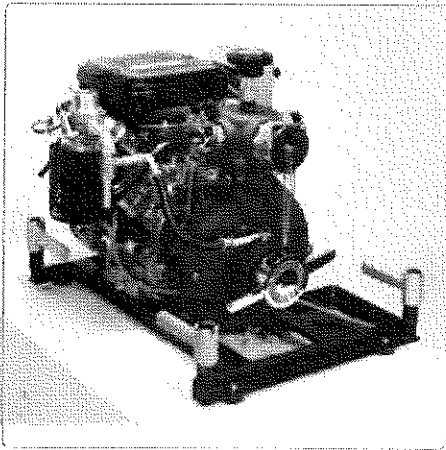
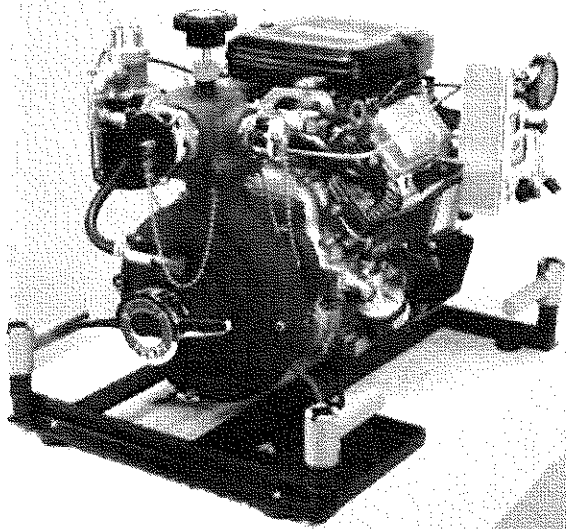
TP MASEJANE

MUNICIPAL MANAGER

DATE: 25/03/2021

2BE 23V VANGUARD

MEDIUM PRESSURE, HIGH VOLUME, DIRECT DRIVE, ENGINE MOUNTED



ENGINE

- Briggs & Stratton Vanguard: 4 cycle, 23 HP, V-twin, OHV, replaceable oil filter, 12-volt starter, recoil rope start back-up, 16 amp regulated alternator, 6 gal. fuel tank, control panel

DIMENSIONS & WEIGHT

- 24"L x 21"W x 24"H, 195 lbs. (89 kg)

APPLICATIONS

- Booster reel, multiple hand lines, wildland/attack fire suppression

STANDARD FEATURES

- Aluminum alloy casing
- Discharge valve
- Bronze impeller and seal rings
- Stainless steel impeller shaft
- Mechanical seal
- Exhaust primer
- Built-in discharge check valve
- Adjustable discharge valve
- 3" NPT suction
- 2-1/2" NPT and 1-2/2" NPT discharges (not shown)

OPTIONS

- Adapters, gauge, battery, caps, Smartstart™

PERFORMANCE

390 gpm (1476 L/M) @ 30 psi (2.1 bar)
200 gpm (757 L/M) @ 110 psi (7.6 bar)
100 gpm (378 L/M) @ 140 psi (9.7 bar)